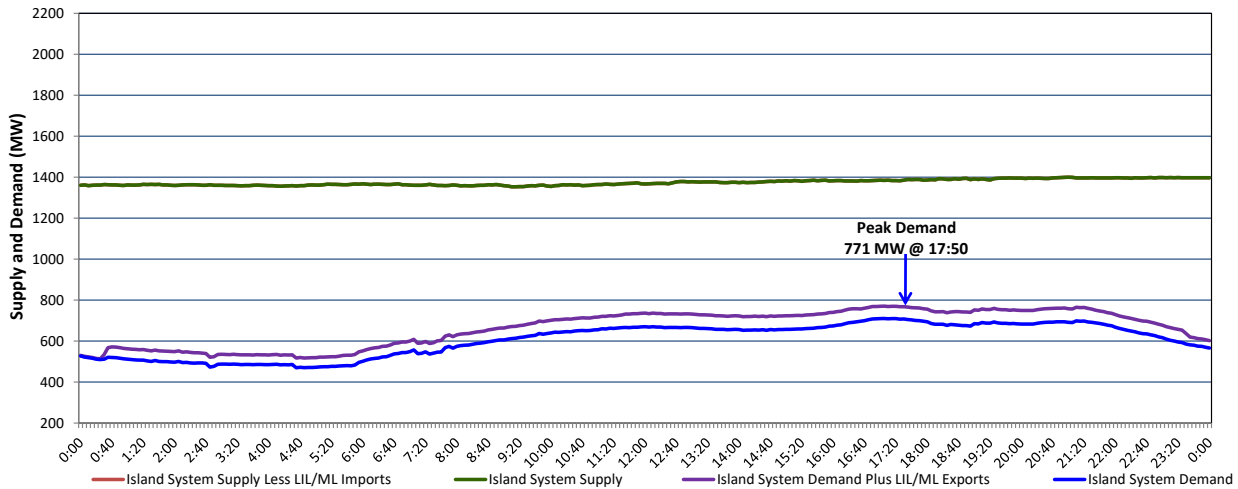


Newfoundland Labrador Hydro (NLH) Supply and Demand Status Report Filed Wednesday, August 10, 2022

Section 1 Island Interconnected System Supply, Demand & Exports Actual 24 Hour System Performance For Tuesday, August 09, 2022



Supply Notes For August 09, 2022

1,2

- A As of 0857 hours, April 04, 2022, Holyrood Unit 3 unavailable due to planned outage (150 MW).
 B As of 1327 hours, May 08, 2022, Bay d'Espoir Unit 6 unavailable due to planned outage (76.5 MW).
 C As of 0800 hours, June 08, 2022, Holyrood Unit 1 unavailable due to planned outage (170 MW).
 D As of 0210 hours, July 03, 2022, Bay d'Espoir Unit 5 unavailable (76.5 MW).
 E As of 0800 hours, July 31, 2022, Holyrood Unit 2 unavailable due to planned outage 150 MW (170 MW).

Section 2 Island Interconnected System Supply and Demand

Wed, Aug 10, 2022	Island System Outlook ³		Seven-Day Forecast	Temperature (°C)		Island System Daily Peak Demand (MW)	
				Morning	Evening	Forecast	Adjusted ⁷
Available Island System Supply: ⁵	1,395	MW	Wednesday, August 10, 2022	13	13	910	910
NLH Island Generation: ^{4,8}	1,050	MW	Thursday, August 11, 2022	13	14	755	755
NLH Island Power Purchases: ⁶	145	MW	Friday, August 12, 2022	15	17	745	745
Other Island Generation:	200	MW	Saturday, August 13, 2022	18	17	705	705
ML/LIL Imports:	-	MW	Sunday, August 14, 2022	16	20	745	745
Current St. John's Temperature & Windchill:	12 °C	N/A	Monday, August 15, 2022	18	18	770	770
7-Day Island Peak Demand Forecast:	910	MW	Tuesday, August 16, 2022	18	18	765	765

Supply Notes For August 10, 2022

3

- Notes:
- Generation outages for running and corrective maintenance are included. These are not unusual for power system operations. They generally do not impact customer supply. The power system operators schedule outages to system equipment whenever possible to coincide with periods when customer demands are low and sufficient supply reserves are available. However, from time to time equipment outages are necessary and reserves may be impacted.
 - Due to the Island system having no synchronous connections to the larger North American grid, when there is a sudden loss of large generating units there may be a requirement for some customer's load to be interrupted for short periods to bring generation output equal to customer demand. This automatic action of power system protection, referred to as under frequency load shedding (UFLS), is necessary to ensure the integrity and reliability of system equipment. Under frequency events have typically occurred 5 to 8 times per year on the Island Interconnected System and the resultant customer load interruptions are generally less than 30 minutes. With the activation of the Maritime Link frequency controller during the winter of 2018, UFLS events have occurred less frequently.
 - As of 0800 Hours.
 - Gross output including station service at Holyrood (24.5 MW) and improved NLH hydraulic output due to water levels (35 MW).
 - Gross output from all Island sources (including Note 4).
 - NLH Island Power Purchases include: CBPP Co-Gen, Nalcor Exploits, Rattle Brook, Star Lake, Wind Generation and capacity assistance (when applicable).
 - Adjusted for curtailable load, market activities and the impact of voltage reduction when applicable.
 - Due to limitations inherent in the design of combustion turbines, the output of combustion turbines may be reduced in the event that ambient temperatures exceed the threshold

Section 3 Island Peak Demand Information Previous Day Actual Peak and Current Day Forecast Peak

Tue, Aug 09, 2022	Actual Island Peak Demand ⁹	17:05	771 MW
Wed, Aug 10, 2022	Forecast Island Peak Demand		910 MW

- Notes: 9. Island Demand / LIL / ML Exports (where applicable) is supplied by NLH generation and purchases, plus generation owned and operated by Newfoundland Power and Corner Brook Pulp & Paper (Deer Lake Power, DLP).